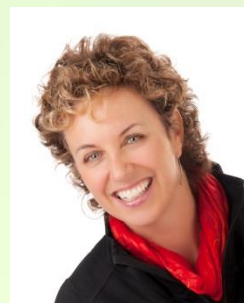




# NICHE WOMEN'S TOURS



## Jewels of Ireland

With Frances Litman

June 16 to 26, 2015

Wild and beautiful, exciting and inspiring, Ireland's energy will win you over the moment you land. From the haunting beauty of the pure unspoiled landscapes and the drama of the coastline, to the urban buzz of the country's dynamic cities, mixed with the magic of thousands of years' worth of culture and history, Ireland is a country that never fails to delight! Enjoy fantastic Irish cuisine, a sheep shearing experience, Castles and cottages, music and dancing, parks and markets, and a trip to the famous Waterford Crystal factory. This tour is a wonderful combination of all of this and so much more. Experience this incredible destination with Frances and prepare to fall in love with the jewels of Ireland!



### Your package includes:

- Accommodation and meals as per the itinerary
- Transfers and sightseeing as per itinerary by private air conditioned motor coach
- Entrance fees to museums and sites mentioned in itinerary
- Admissions to: Parke's Castle, Foxford Woollen Mills, Rathbaun Farm, Cliffs of Moher & Atlantic Edge Exhibition, Waterford Crystal, Dunbrody Famine Ship
- Working sheepdog performance
- Music Session at Marine Bar
- Guided walking tour of Glasnevin Cemetery and Museum
- Tour and tasting at the Old Jameson Distillery, Dublin



**Price per person land only \$3,799** based on two sharing and minimum of 10 passengers. (Limited to a maximum of 12)  
Not included: personal expenses, international airfare and taxes, meals not specified, tipping. Single supplement \$650.00  
Private transfers are available at an additional cost for those not arriving at the same time as the group. Hold your space with a \$600 non-refundable deposit.

To book contact your Travel Advisor or call:

(250) 480-0008 or Toll free: 866-544-0008

Email: [cathy@nichetravel.ca](mailto:cathy@nichetravel.ca)

1197 Palmer Rd Victoria BC V8P-2H5 BC Reg. 63139

[www.nichetravel.ca](http://www.nichetravel.ca)

BOUTIQUE TOURS THAT INSPIRE

**NICHE TRAVEL**



\*Frances is a Master photographer (MPA) with 20 years of experience, an accredited international photography judge, speaker, Laughter Yoga instructor and former newspaper journalist. Her unbridled enthusiasm, love for people, photography and art guarantees an uplifting and educational experience for all.



June 16 - Tuesday | Arrive Dublin

(B, D)



Welcome to Ireland. Upon arrival we are met by our guide. A short drive takes us to the Man 'O War traditional Irish pub, dating back to 1595, for breakfast. Afterwards we travel on to our hotel in Meath to relax and unwind before dinner. Overnight – Dunboyne Castle, Meath (or similar)

June 17 - Wednesday | Royal Meath

(B,D)

The heritage town of Trim is first on our agenda this morning. We visit Trim Castle, the largest Anglo-Norman castle in Ireland. We then head north, through charming towns of Kells, Longford and Westmeath, to our lovely castle hotel. After dinner we listen to some 'tall tales' of Ireland in the hotel's Dungeon Bar. Overnight – Kilronan Castle, Roscommon (or similar)

June 18 - Thursday | Sligo – Yeats Country

(B,D)

Today we visit the Mass Rock and Holy Well at Tobernalt and then the poet W.B.Yeats grave in Drumcliffe before travelling on to Mullaghmore for spectacular views of Donegal Bay. In the afternoon we tour Parke's Castle on the shores of Lough Gill. Overnight – Kilronan Castle, Roscommon (or similar)

June 19 - Friday | Westport & Connemara

(B,D)

Today we learn about the fascinating success story of Foxford Woollen Mills before heading to Westport on Clew Bay. We continue to Leenane on Killary Harbour, and enjoy a visit to Kylemore Abbey. Enjoy some Irish music tonight after dinner in the hotel bar. Overnight – Connemara Coast Hotel, Galway (or similar)

June 20 - Saturday | Galway – City of the Tribes

(B,D)

This morning we visit Rathbaun Farm in Ardrahan, Co. Galway. We will be taken on a fascinating excursion through Irish farm practices, including sheep shearing, and the art of handling them with a sheep dog. While there we enjoy some home baked scones with tea or coffee. The afternoon is free in Galway City known as 'the city of the Tribes', to explore its shops, pubs and historic sights. Overnight – Connemara Coast Hotel, Galway (or similar)

June 21 - Sunday | Burren & Cliffs of Moher

(B,D)

This morning we enjoy a scenic drive along the southern shores of Galway Bay via Ballyvaughan, before traversing the Burren region of Clare. We view the mighty Cliffs of Moher, that stretch for over 8 km above the Atlantic Ocean, and then continue along to Killimer where we cross the Shannon by ferry to the Kingdom of Kerry. Overnight – Malton Hotel, Killarney (or similar)

June 22 - Monday | Ring of Kerry

(B,D)

Today we begin with a leisurely tour around the Iveragh Peninsula, reputed to be the most scenic 100-mile drive in Europe. Travel via Killorglin, Cahirciveen, Waterville on Ballinskelligs Bay and the quaint village of Sneem with its brightly painted shops and cottages. On through Moll's Gap and along by Ladies View that provides some spectacular vistas of the famous Lakes of Killarney. Overnight – Malton Hotel, Killarney (or similar)





#### June 23 - Tuesday | Blarney & Cork

(B,D)

Leaving Killarney for Waterford we travel over the Kerry Mountains to the village of Blarney to shop for handcrafts and a chance to kiss the famous 'stone of eloquence' (optional). Enjoy a panoramic tour of Cork City, including a stop in the English Market. Afterwards we continue along the coast via Youghal and Dungarvan, with a stop for some refreshments and a little Irish music. Overnight – Faithlegg House, Waterford (or similar)

#### June 24 - Wednesday | Wexford & Wicklow

(B)

Today we visit the Waterford Crystal Visitor Centre, home of the world's most famous crystal. We then head for Dublin through the south-eastern counties of Wexford, known as the 'Model County', and Wicklow known as the 'Garden of Ireland'. In New Ross we will follow in the footsteps of a group of Famine emigrants as we board a replica of the sailing vessel Dunbrody at the quayside. Overnight – Clontarf Castle, Dublin (or similar)

#### June 25 - Thursday | Dublin

(B,D)

This morning we experience a guided panoramic tour of Dublin's famous streets, squares, magnificent buildings, and beautiful public parks. Then we enjoy a walking tour of the award winning Glasnevin Museum and Cemetery. The afternoon is free for shopping or exploring the city. Tonight we visit the Old Jameson Distillery in Smithfield for a tour and tasting, followed by dinner with some rousing Irish music and dancing. Overnight – Clontarf Castle, Dublin (or similar)

#### June 26 - Friday | Tour ends

(B)

Your tour ends after a final hearty Irish breakfast in your Dublin hotel.

